

QA0 Report



Project Code 2018.A.00023.S
Session uid://A001/X13b3/X1f
SchedBlock uid://A001/X13b3/X1b (Venus_a_06_TM1)
ExecBlock uid://A002/Xd90607/X10f75 ✔ Pass

Sources Callisto, J18322039, J20001748, Venus
Antennas 43 (100.0 % for Cycle 6)
Array 12 [m]
Baselines 15m -- 313m
Band ALMA_RB_06
Weather PWV 1.90 mm; Wind 4.63 m/s; Humidity 15.52 %; Pressure 559.45 hPa
Atmosphere Tsys (Min/Avg/Max) : -1.0/117.2/165.3
 Trec (Min/Avg/Max) : -1.0/48.6/79.0

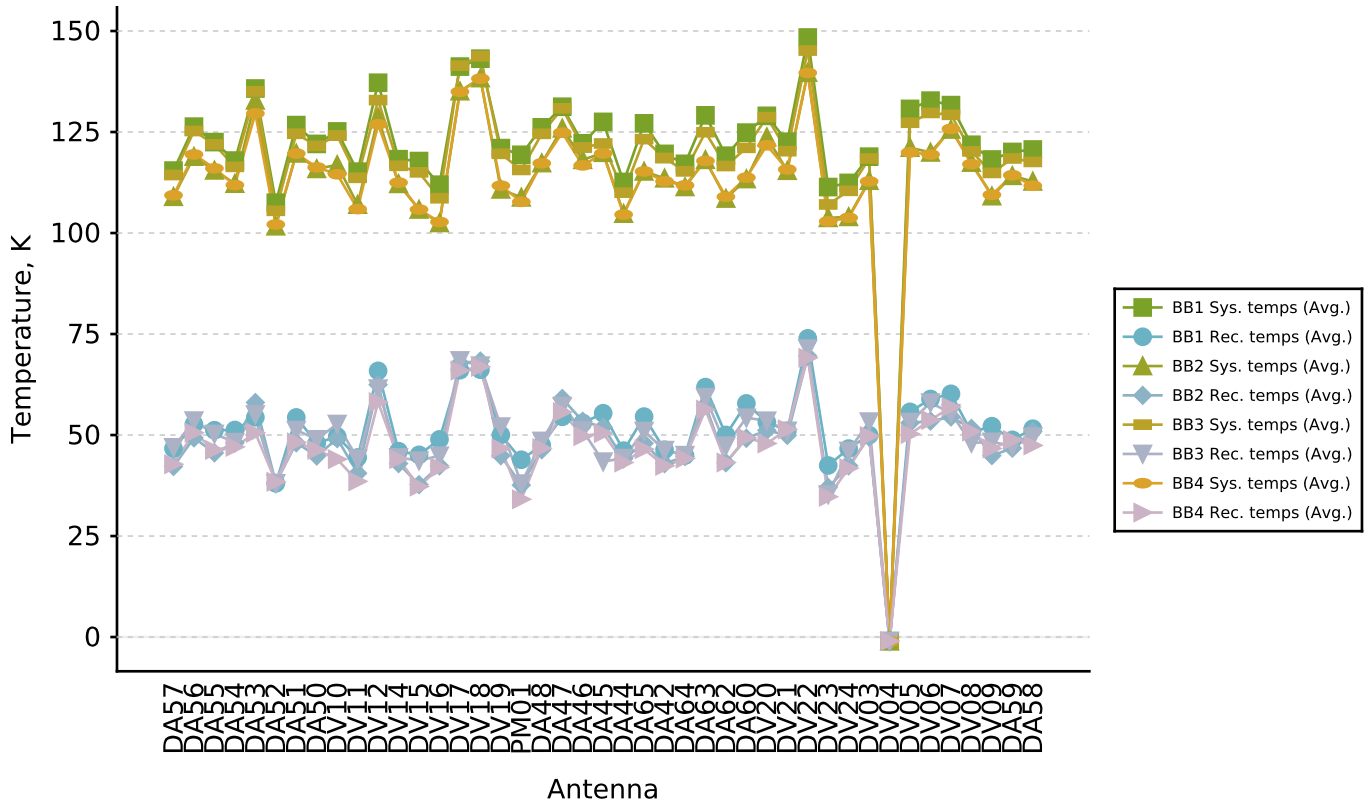
Final QA0 comment DV23 high phase rms. Phase pattern related to Callisto. Otherwise, data look fine. Manually set to 1.. Please check.
 --
 The execfraction results:
 execFraction : 0.7222327075771645
 TimeOnSource_OT : 2700.0
 Tsys_EB : 114.6152
 NAntennas_EB : 35.0
 TimeOnSource_EB : 2721.6000000000004
 Tsys_OT : 119.51871603782371
 NAntennas_OT : 43.0

Times on sources

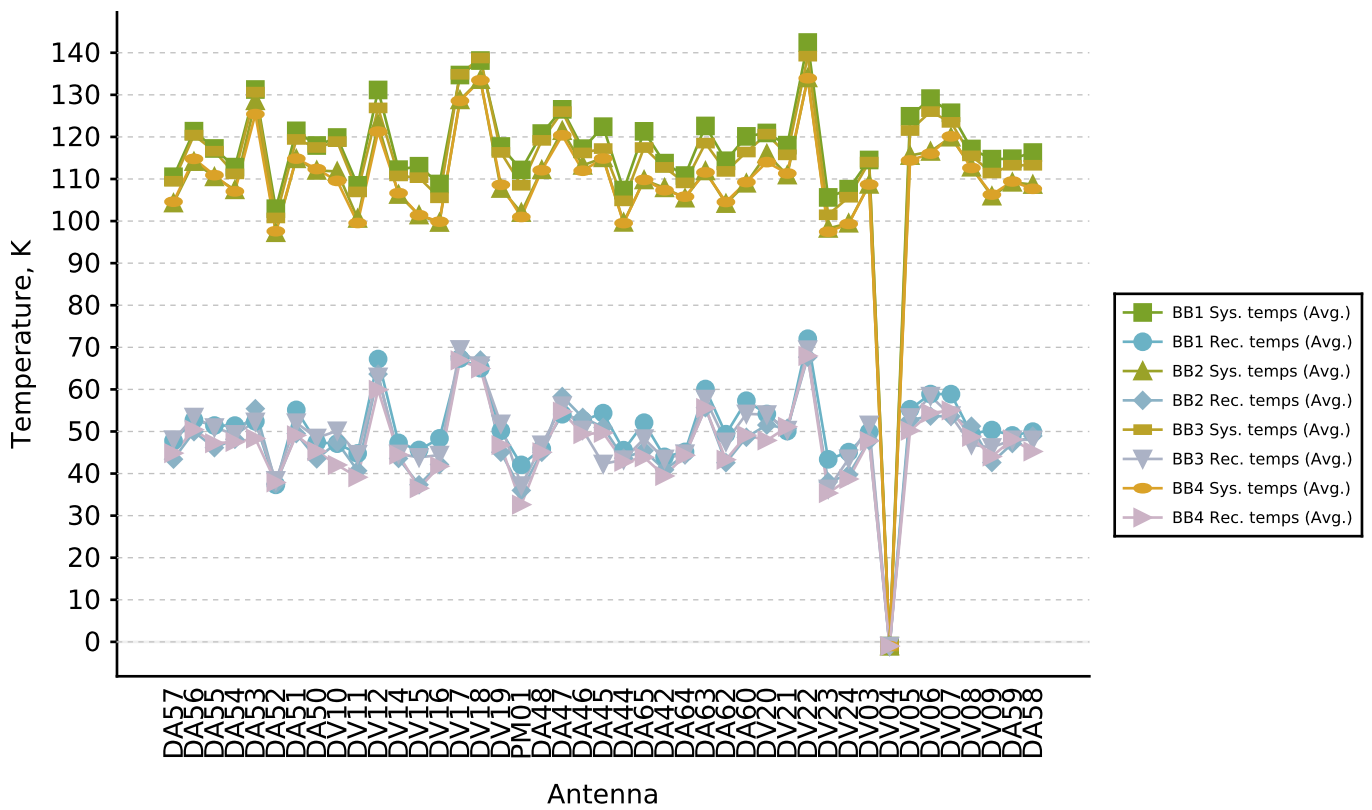
OBSERVE_TARGET (Venus)	45.60min (15min expected)
CALIBRATE_ATMOSPHERE (Venus, Callisto, J2000-1748)	7.85min
CALIBRATE_BANDPASS (Callisto)	30.35min
CALIBRATE_FLUX (Callisto)	30.35min
CALIBRATE_PHASE (J2000-1748)	4.55min
CALIBRATE_POINTING (J1832-2039)	2.03min
CALIBRATE_WVR (J1832-2039, Venus, Callisto, J2000-1748)	44.78min

Atmosphere calibrations

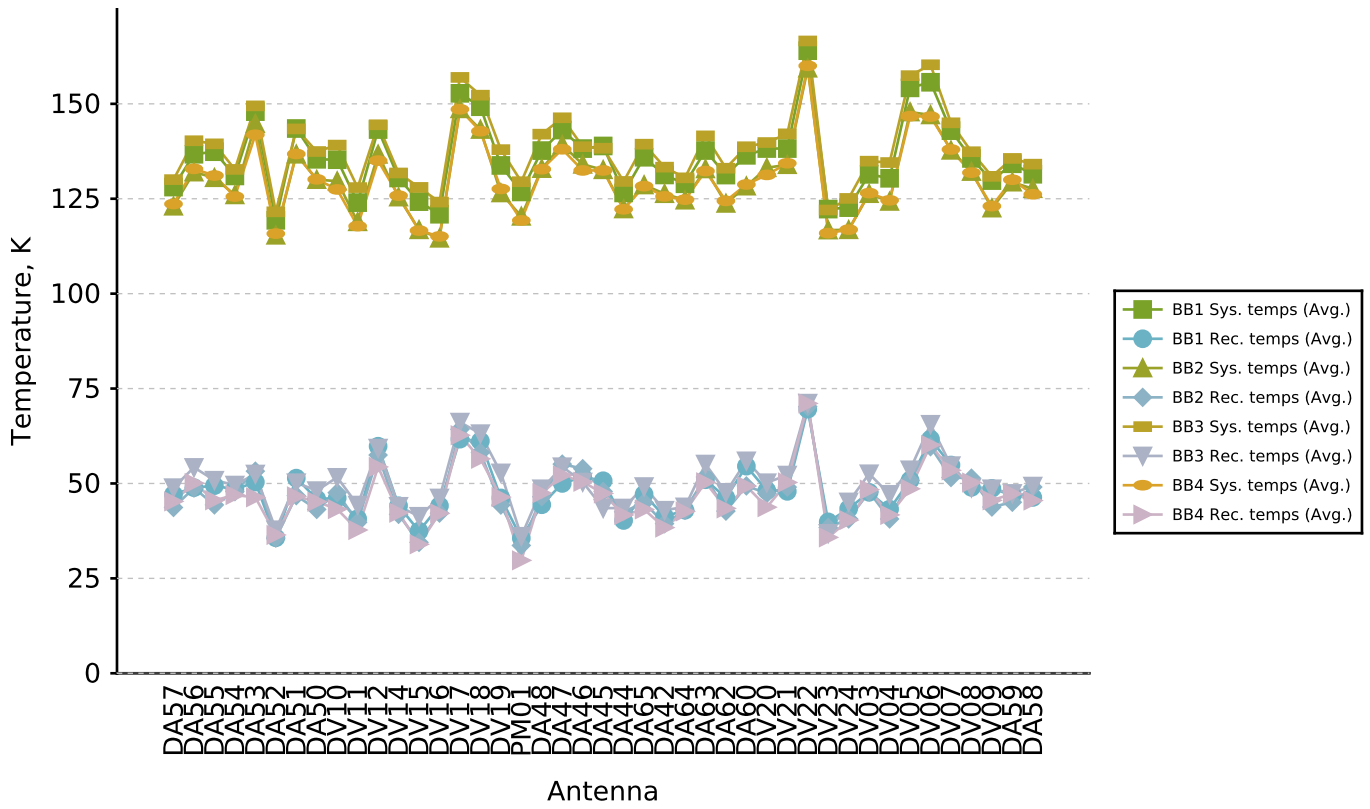
Source: J20001748



Source: Venus

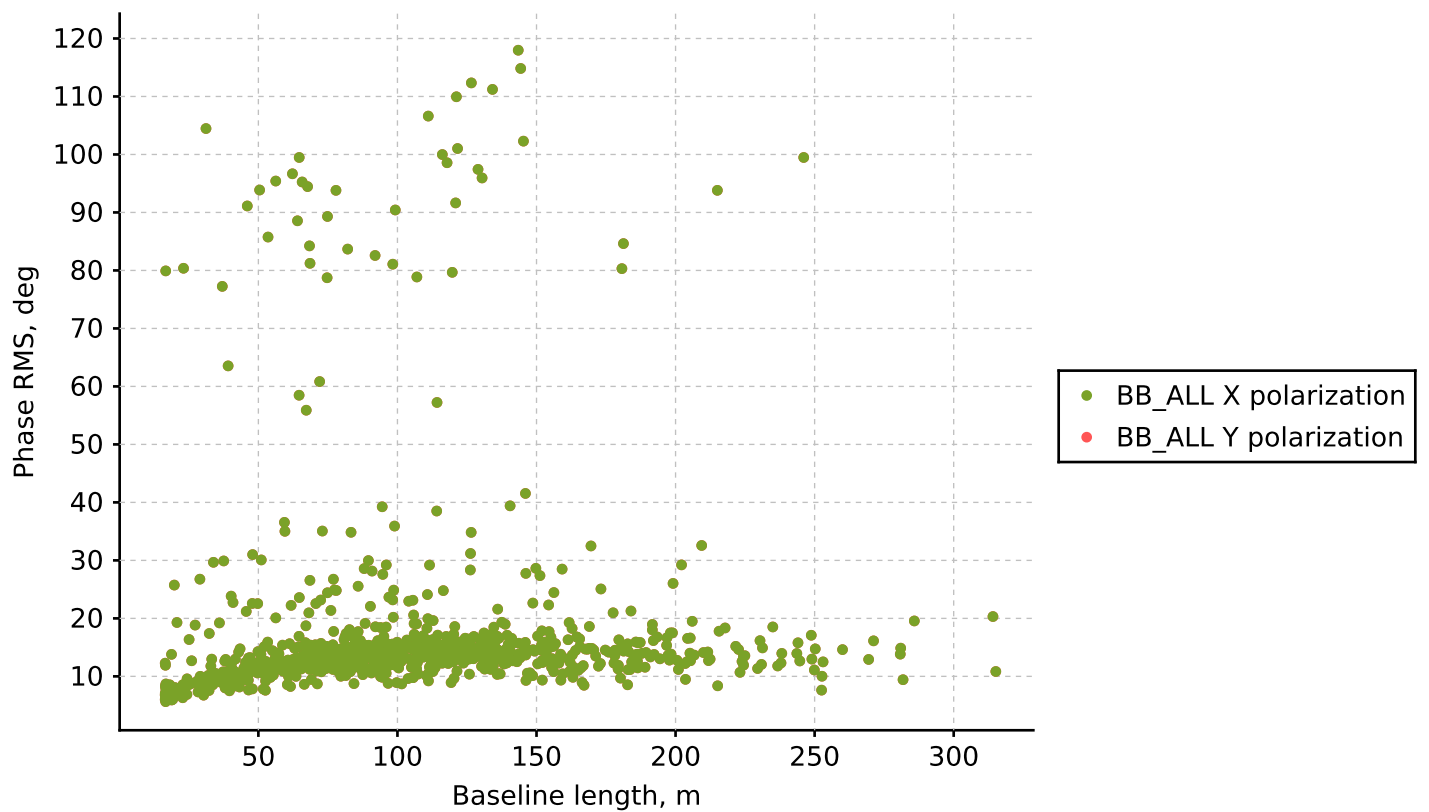


Source: Callisto

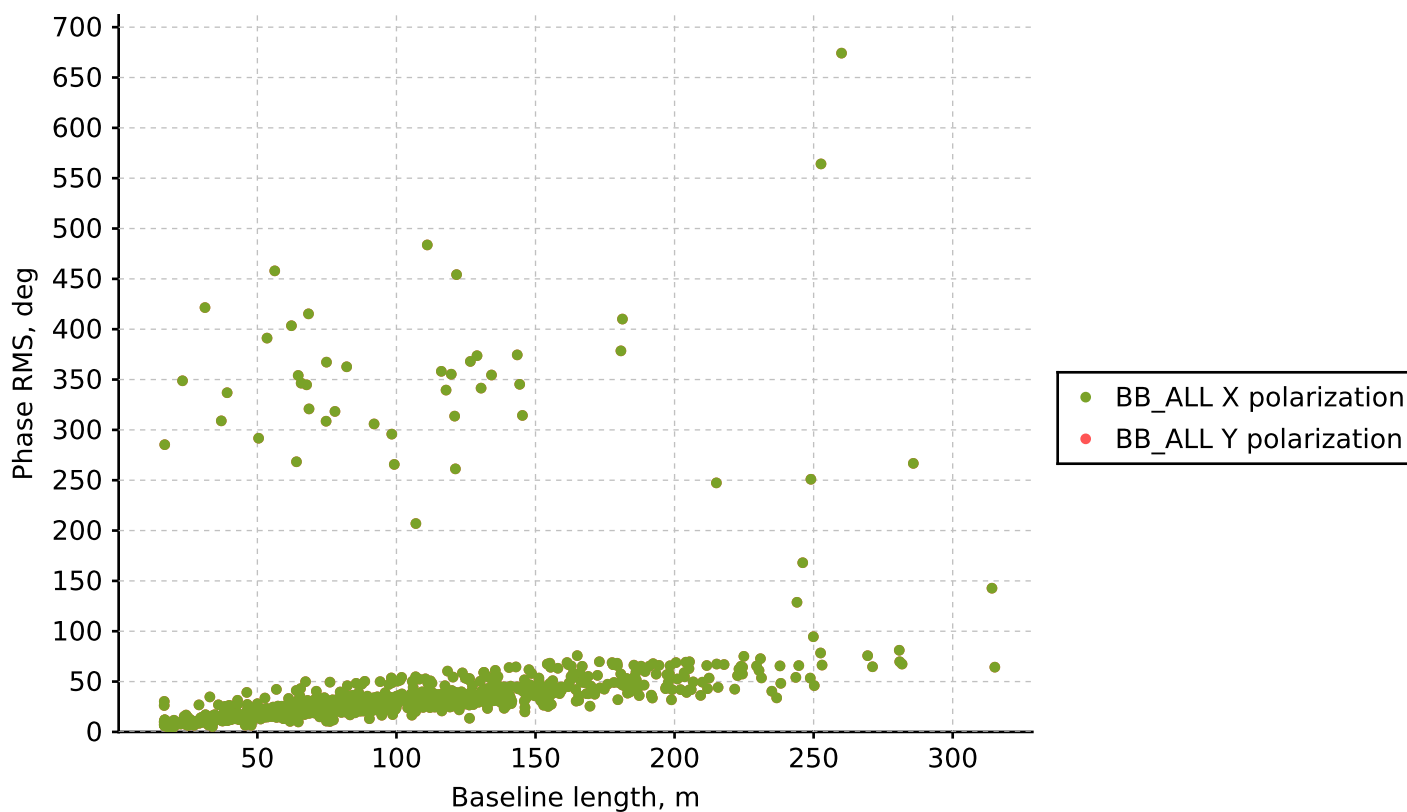


Phase RMS

Source: J20001748

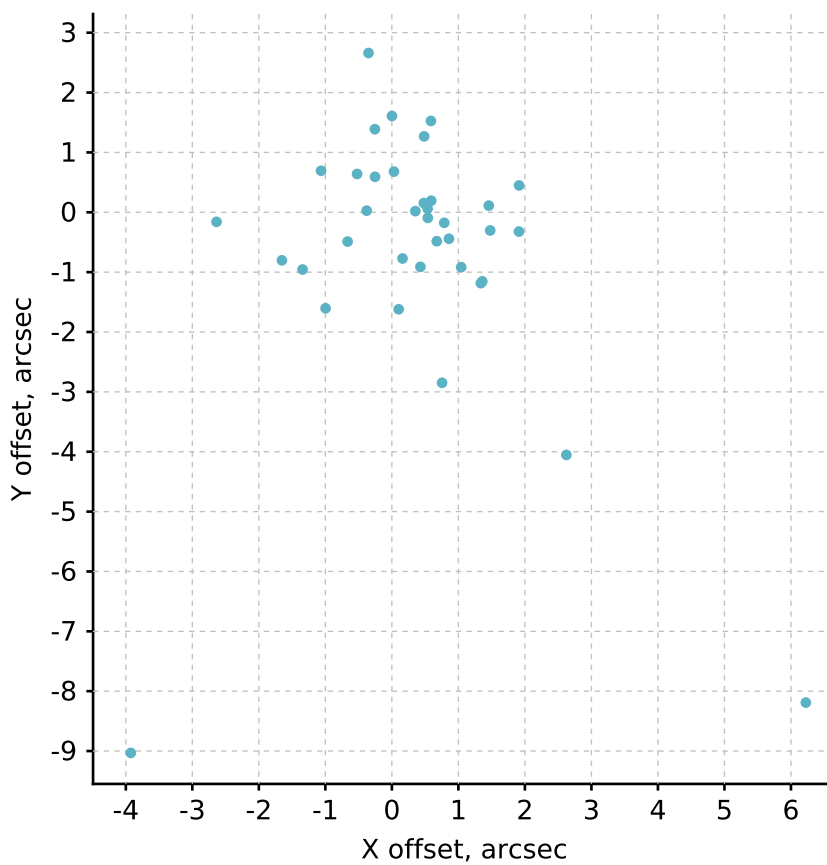


Source: Callisto

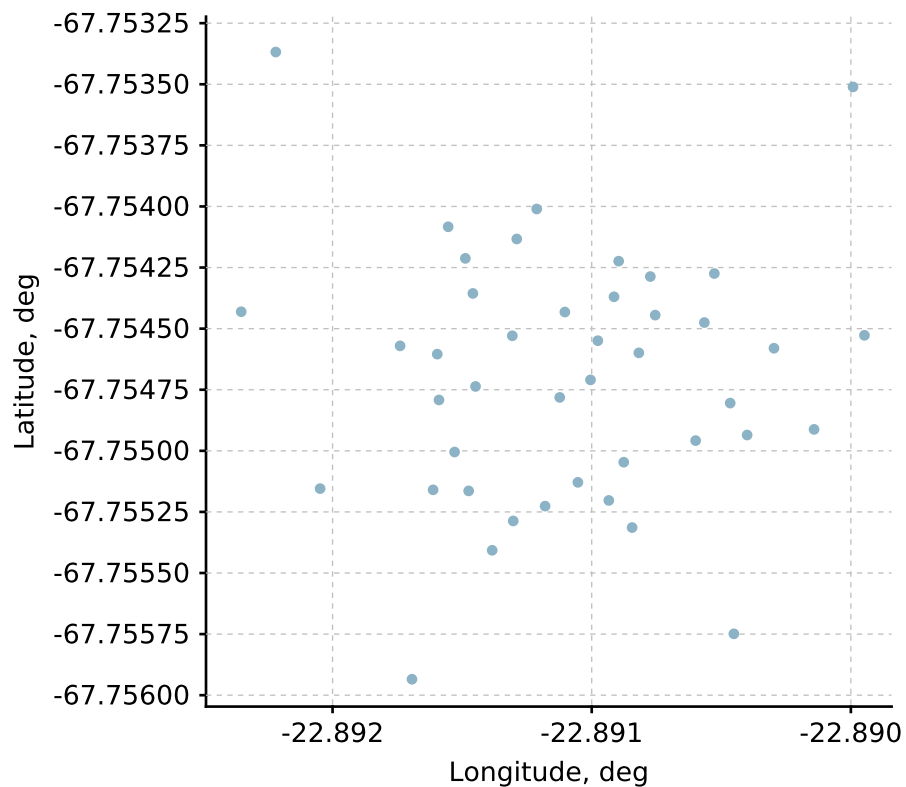


Pointing offsets

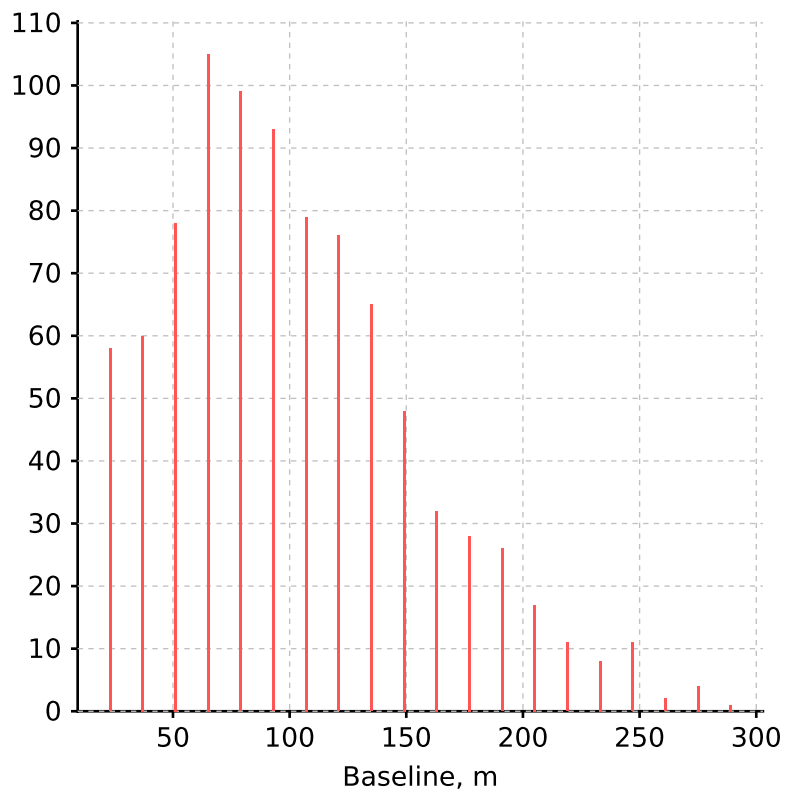
Source: J18322039



Antenna positions



Baseline distribution



Comments and Attachments

ExecBlock: uid://A002/Xd90607/X10f75

✓ Pass

Attachments: [aoscheck_phase_solution.png](#), [aoscheck_amplitude.png](#), [aoscheck_phase_solution.png](#), [aoscheck_amplitude.png](#)

